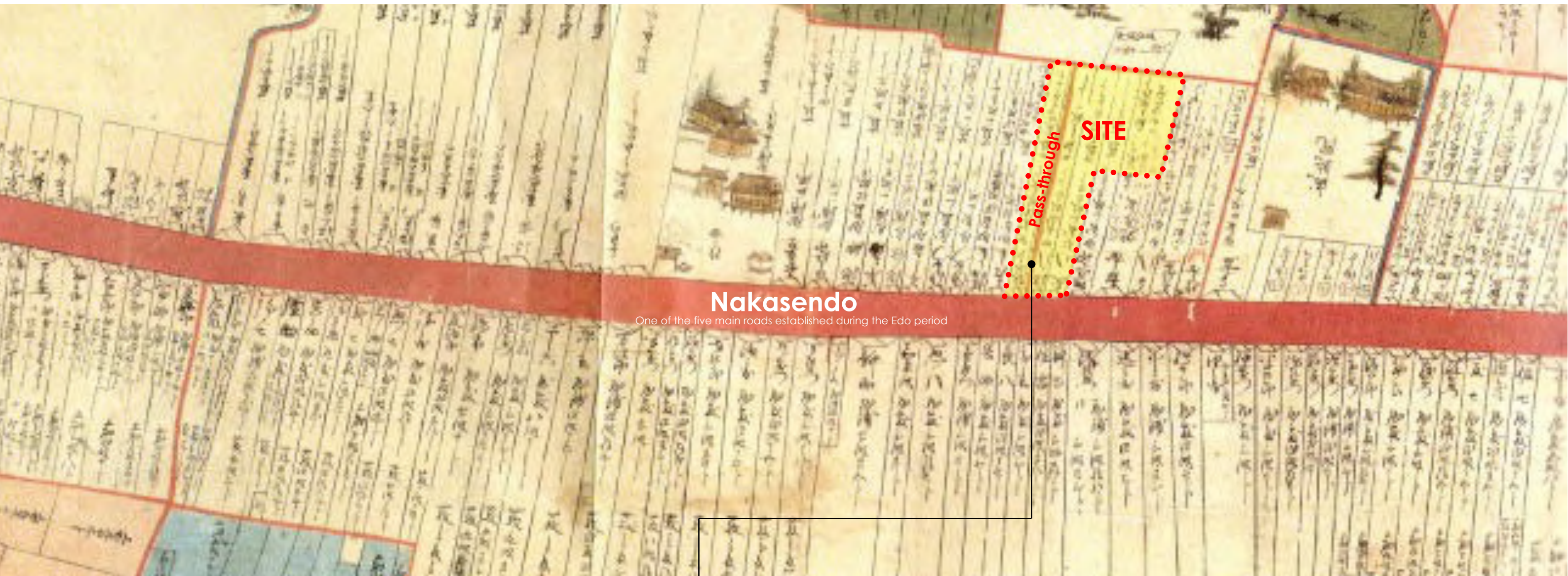


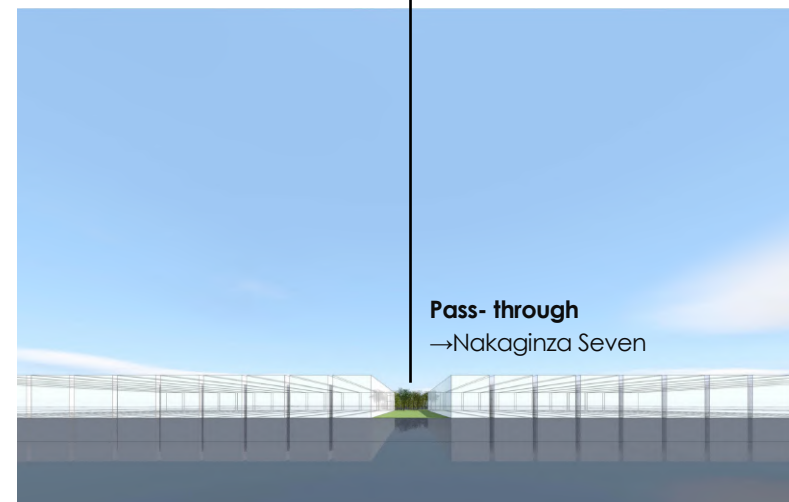
# 400 years ago in Urawa



## Nakasendo

One of the five main roads established during the Edo period

The site is located along the Nakasendo, one of the five main roads established during the Edo period in 1601, with Urawa Station being renowned as the third post town from Edo (Tokyo). Alongside the Nakasendo, numerous long-established businesses from the Edo period continue to operate, making it a captivating area rich in both commercial and cultural allure. The commercial value of properties directly connected to the roadway was exceptionally high, leading to the creation of elongated, strip-shaped plots along the highway. Furthermore, within these strip-shaped blocks, narrow "pass-through" alleys were present, which, in the post-war reconstruction era, led to the formation of bustling streetscapes with small eateries lining these passageways. "Nakaginza Seven," an arcade street developed from one such alley leading from the Nakasendo to the west exit of Urawa Station, emerged as one of the most vibrant areas.

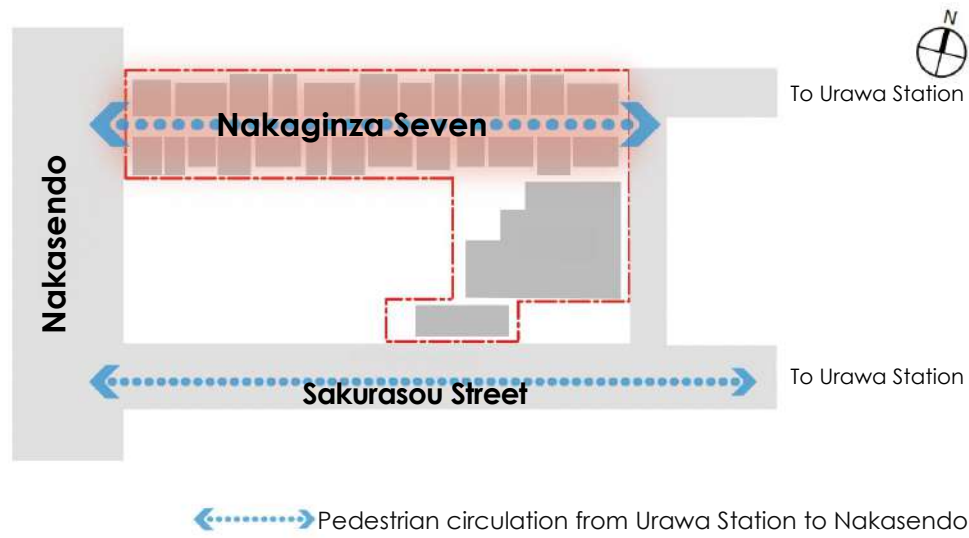


### URAWA GARDEN BLDG.

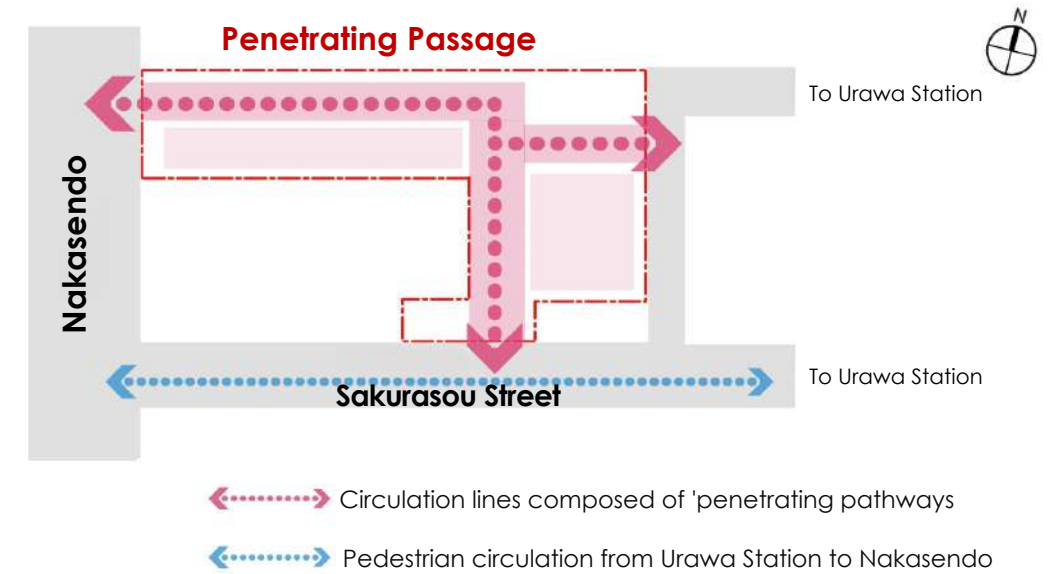
The exterior captures the vibrancy of the former Nakaginza Seven with glass cubes suspended above the passageway, surrounded by white massive volumes. These are staggered to evoke the traditional Japanese streetscape formation mechanism, creating a striking and beautiful facade design.



# Following the History of the Town

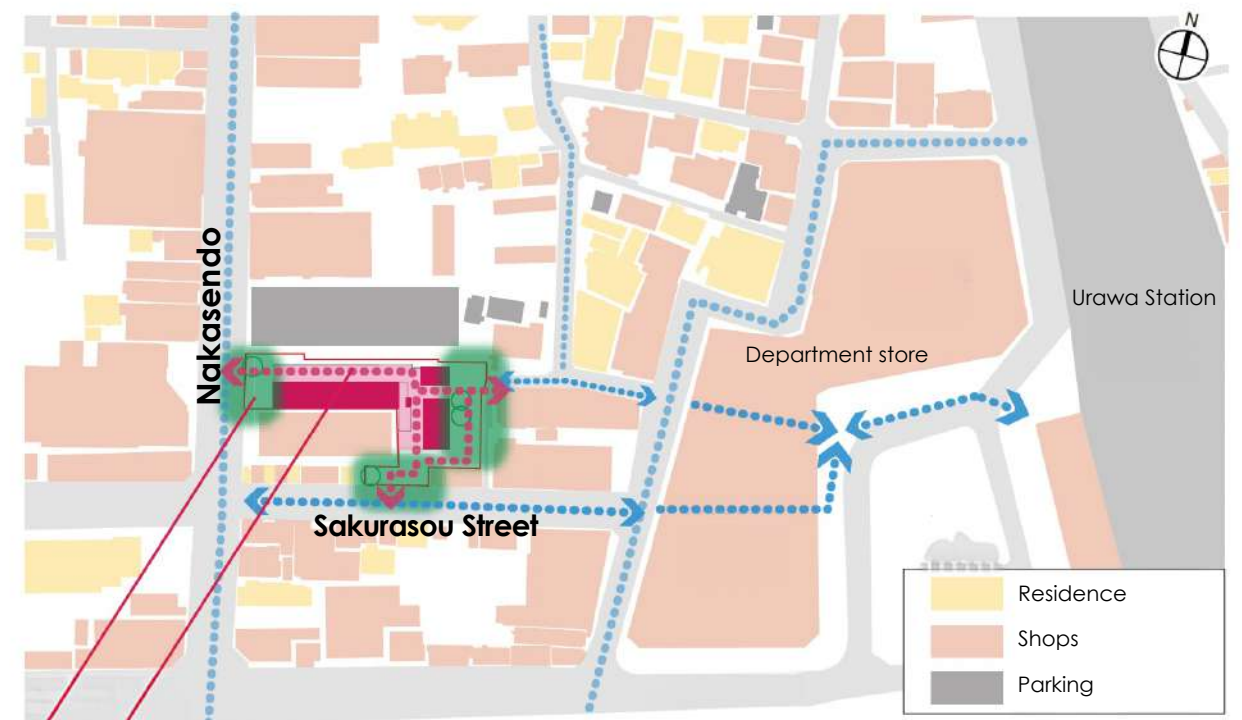
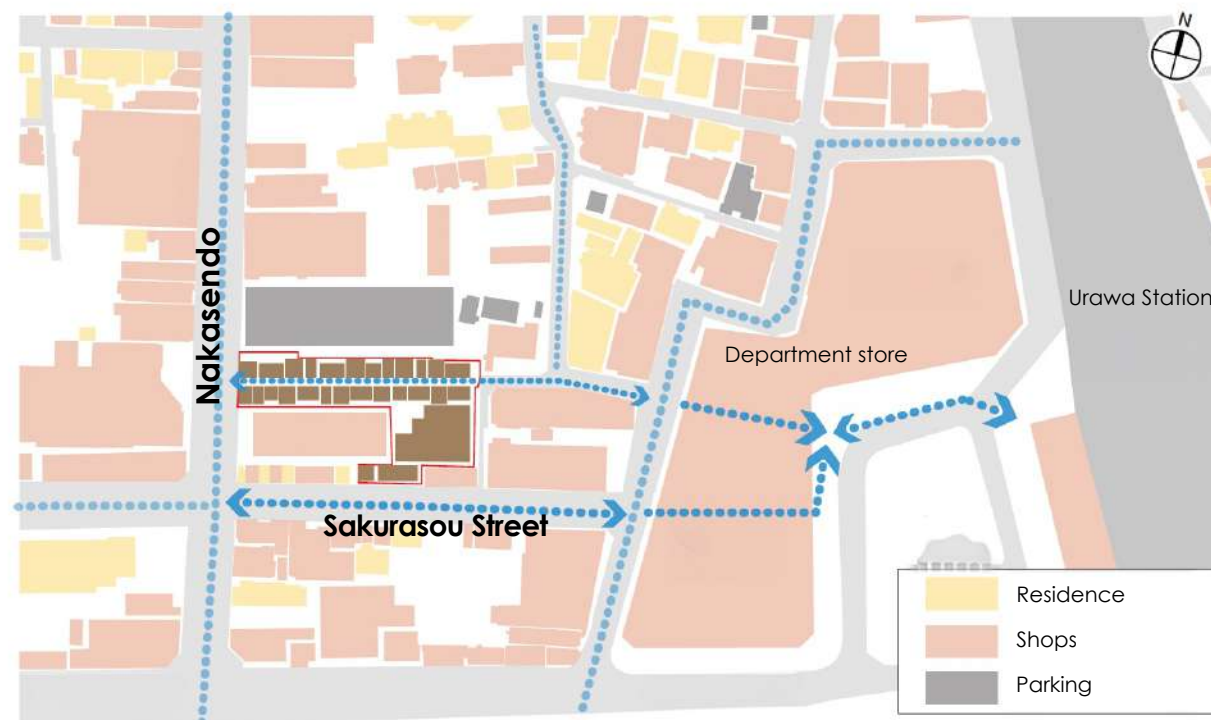


The planned site was home to "Nakaginza Seven," a shopping street that had been lined up since the post-war era and loved by the people of the town. It was used as a thoroughfare from Urawa Station to the old Nakasendo.



Inheriting the east-west thoroughfare of the former "Nakaginza Seven," and also establishing a thoroughfare connected to the south side of Sakurasou Street, we are planning a "penetrating passage" that constitutes part of the town's pedestrian network. The plan is to revive the long history, time, and memories of the town.

# Creates liveliness in the City



In addition to the existing east-west pedestrian circulation, new north-south circulation and a plaza where people can stay are established, creating a walkability in the city.

By creating a thoroughfare and spatial composition that inherits the town's long history and is familiar to its people, we aim for an office building that naturally allows people to pass through and blend into the town.



# "Penetrating Passage" Reconstructing the Space of the Shopping Street with Connected Cubes

## 1. Monotonous passage



## 2. Adding undulations to the surroundings



## 3. Sequence of white cubes

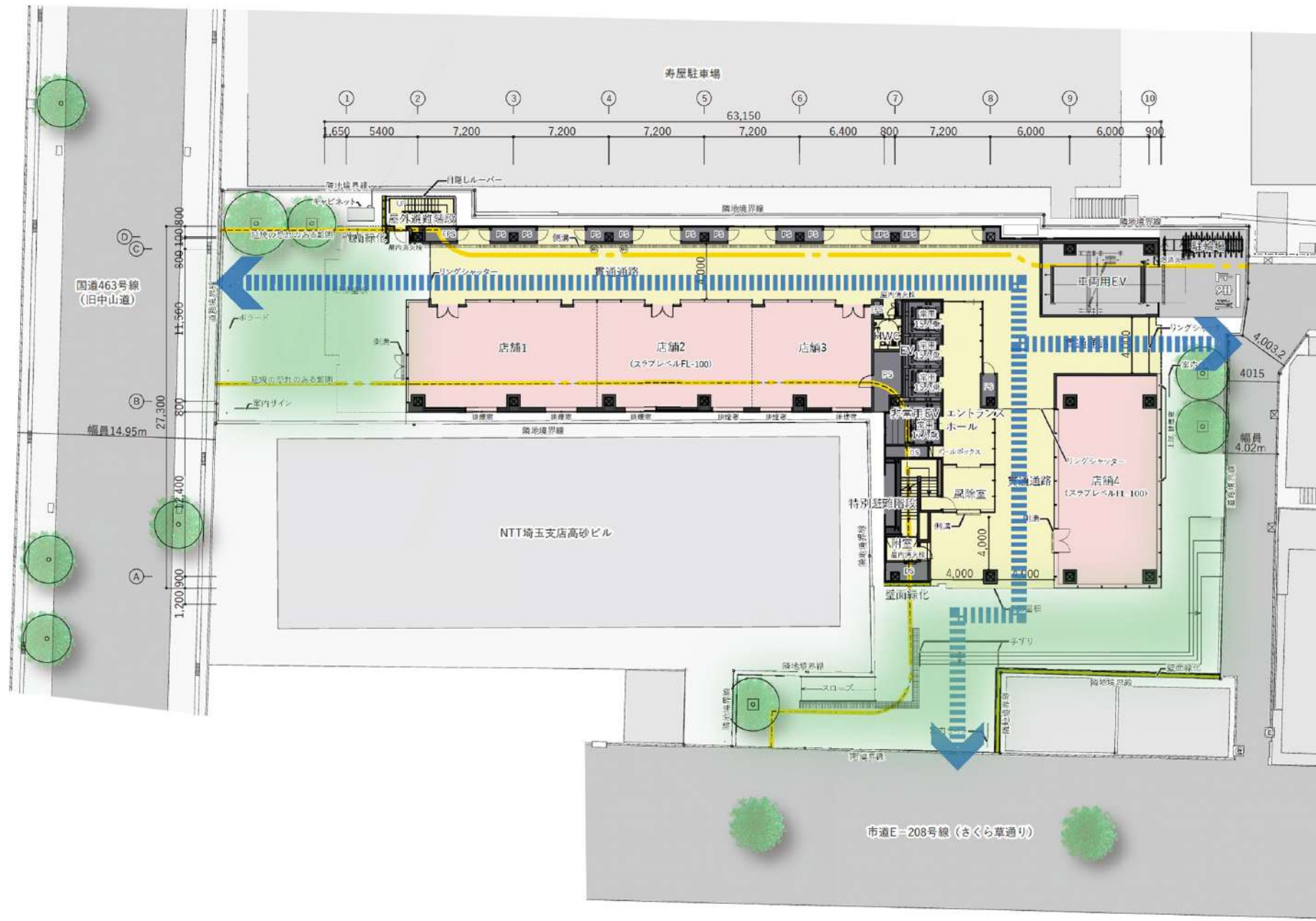


The former "Nakaginza Seven "

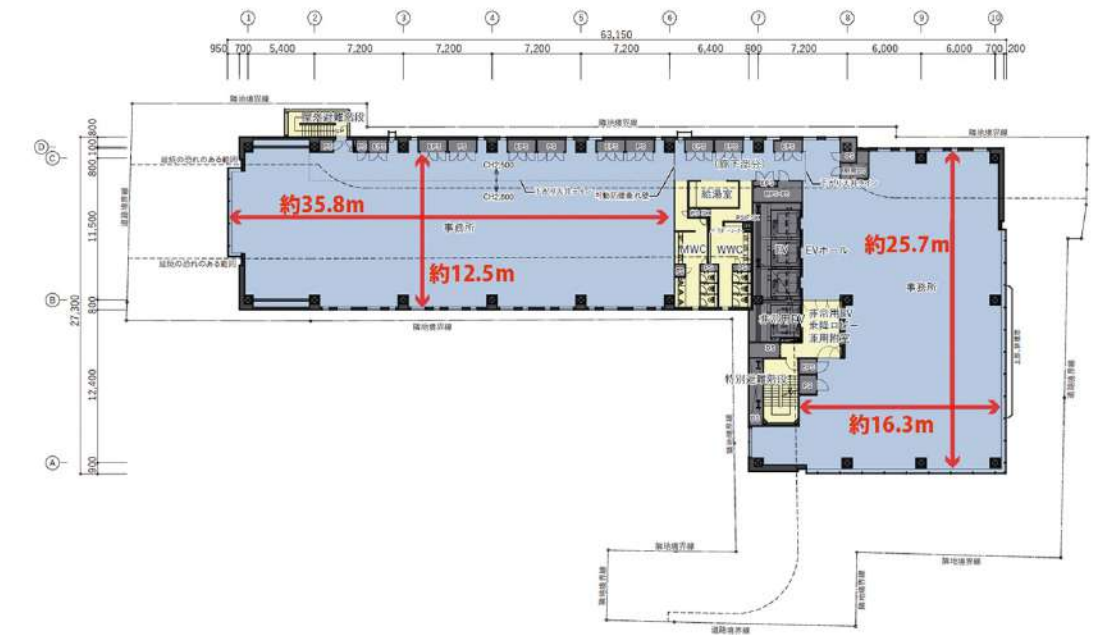


The "penetrating passage" with continuous cubes





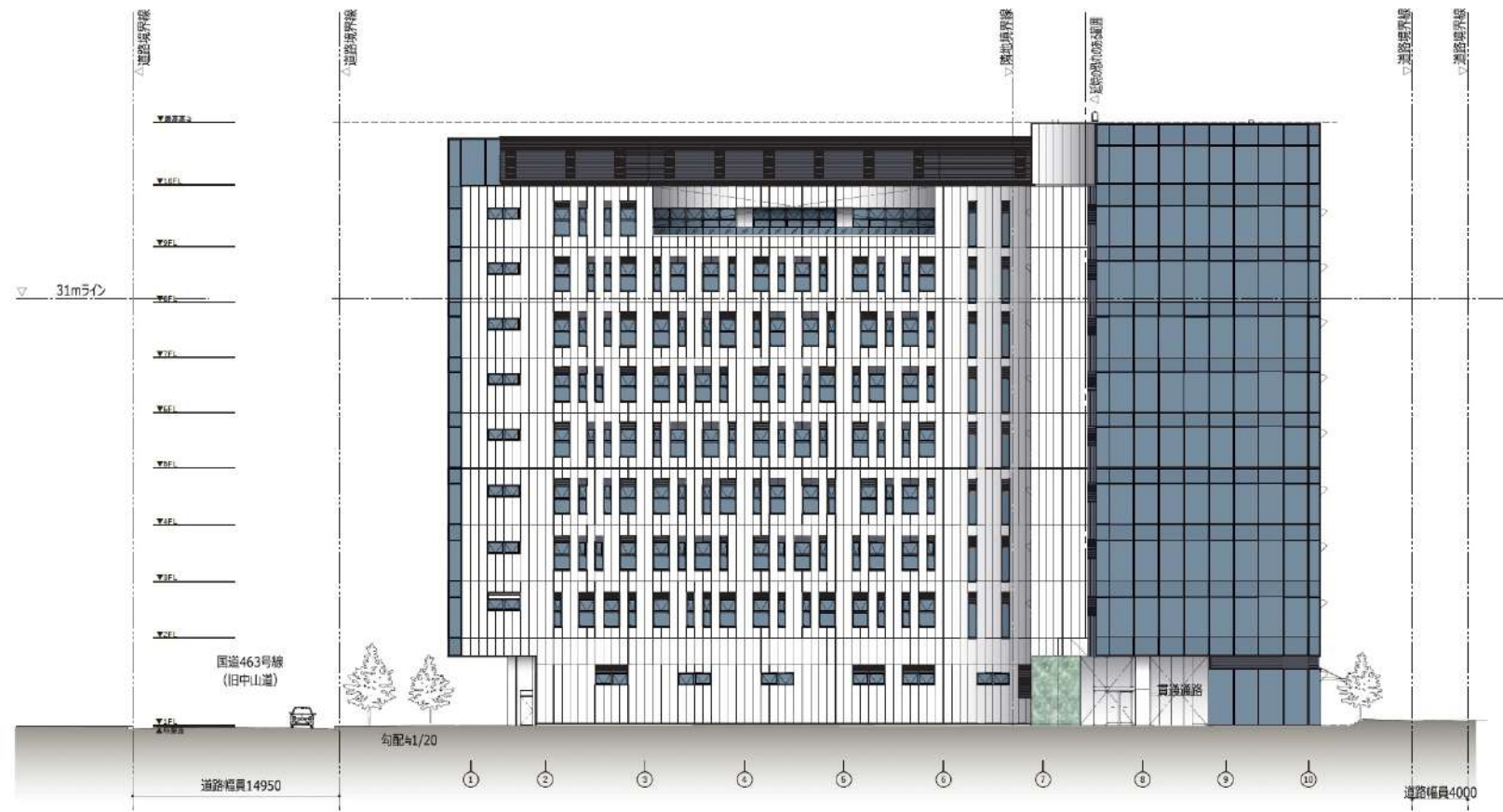
Site Plan / 1F Plan



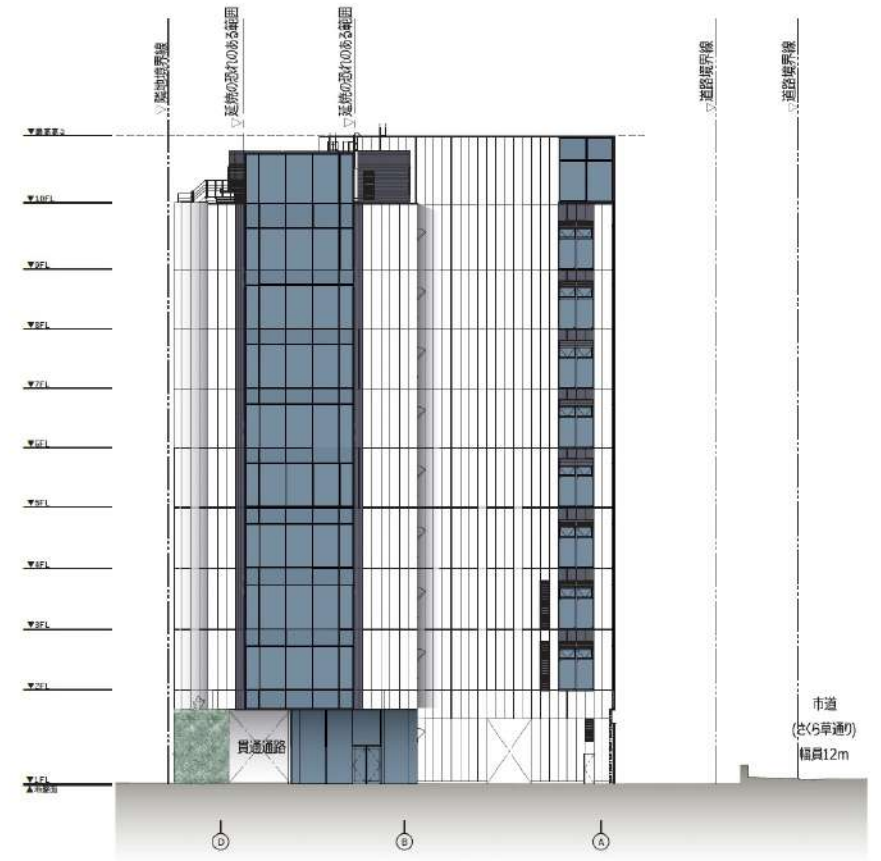
2~8F Plan



Section



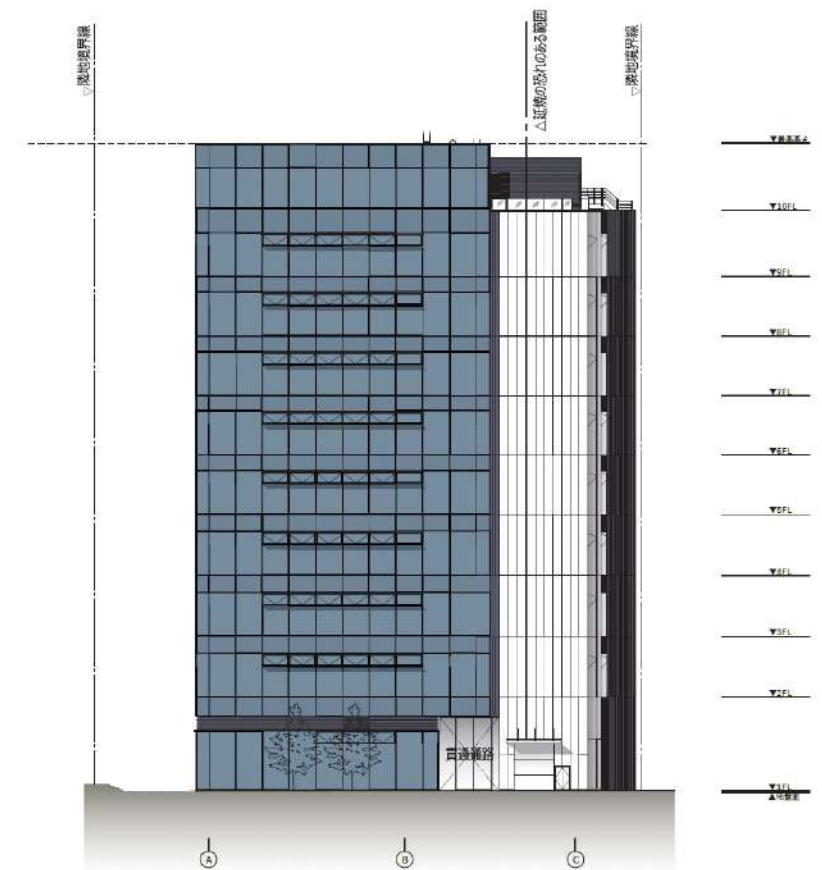
North Elevation



East Elevation



South Elevation

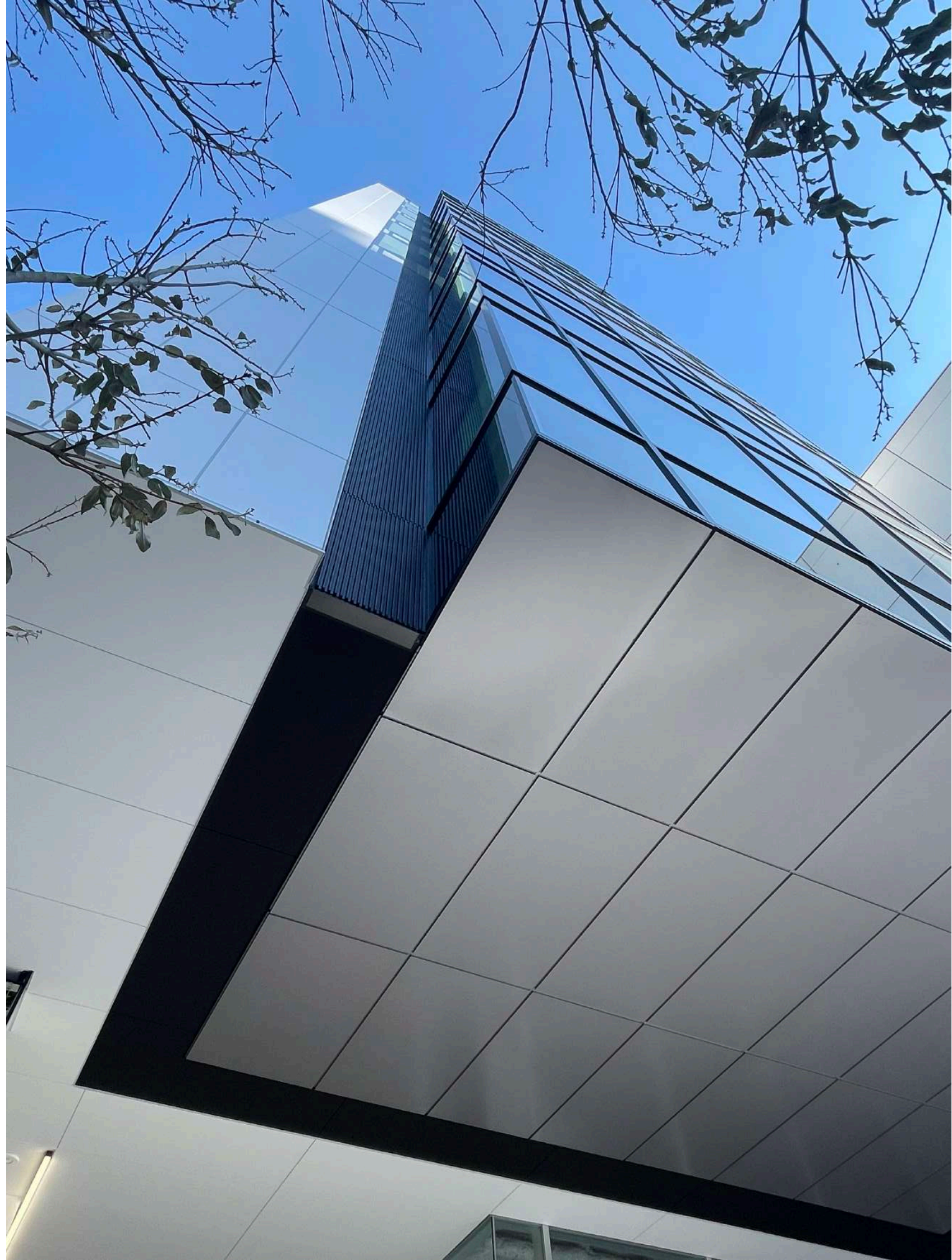


West Elevation

Details of the west facade



Looking up at the west facade



West side night view

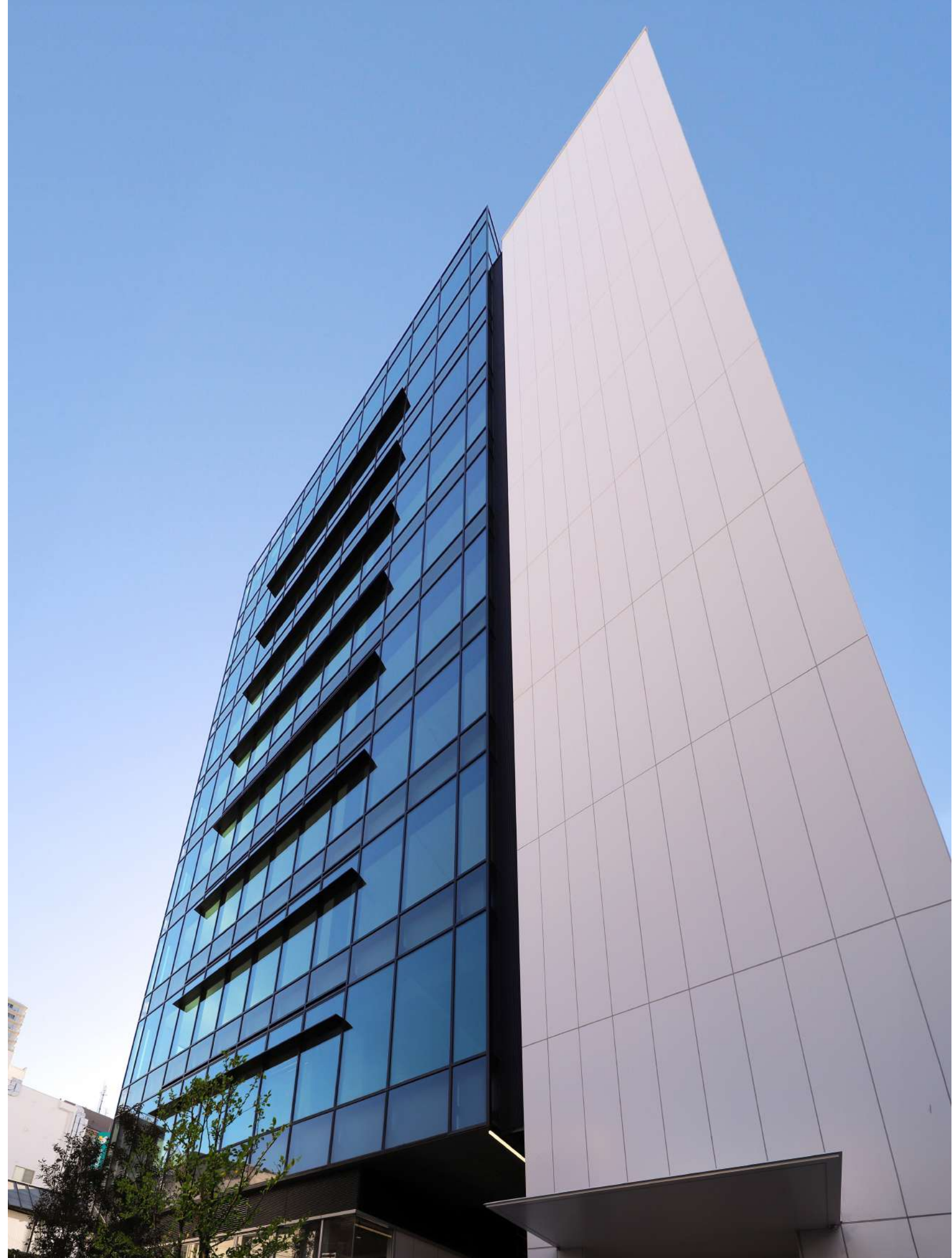




Details of the east facade



Looking up at the east facade



North facade



North facade



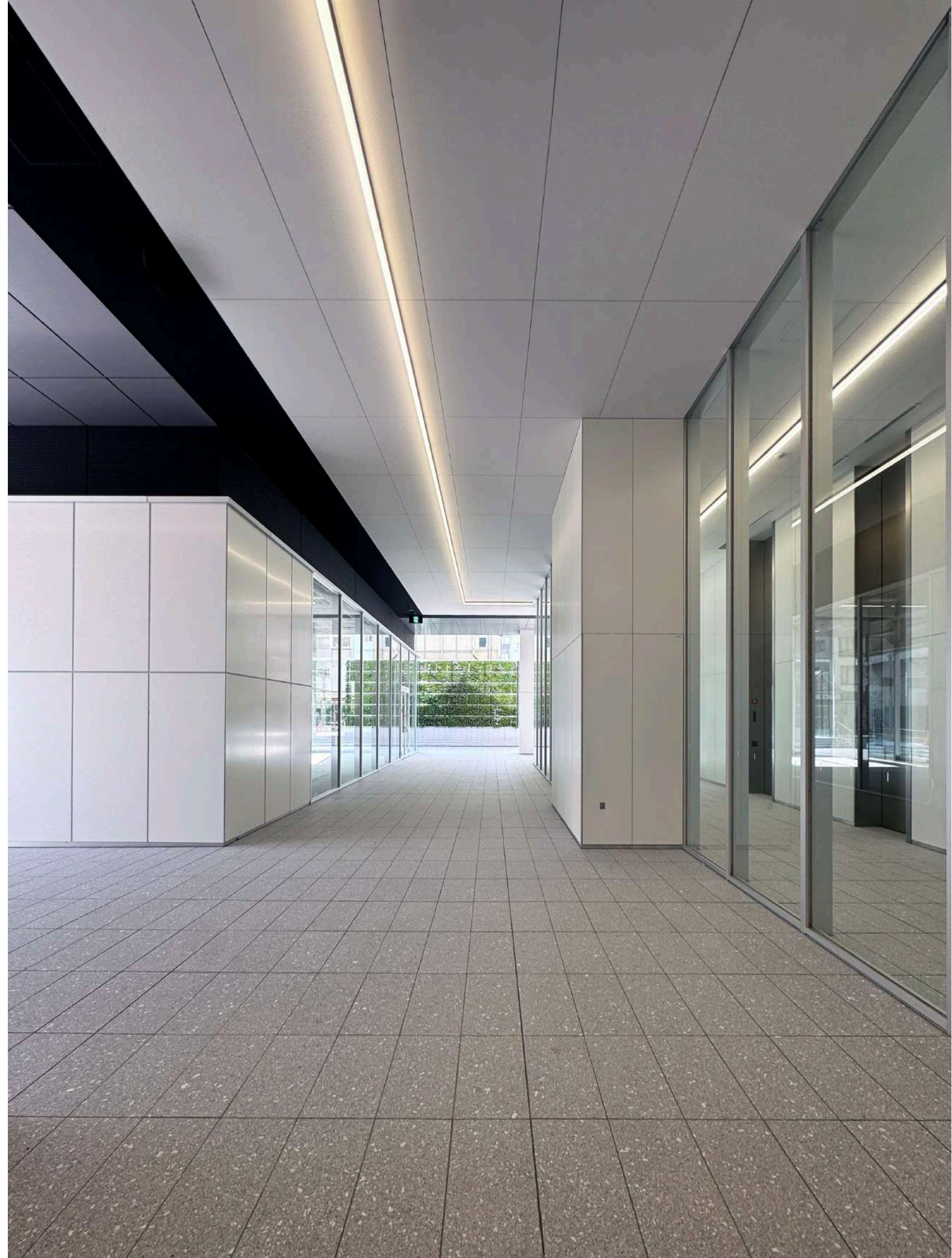
penetrating passage



penetrating passage



penetrating passage

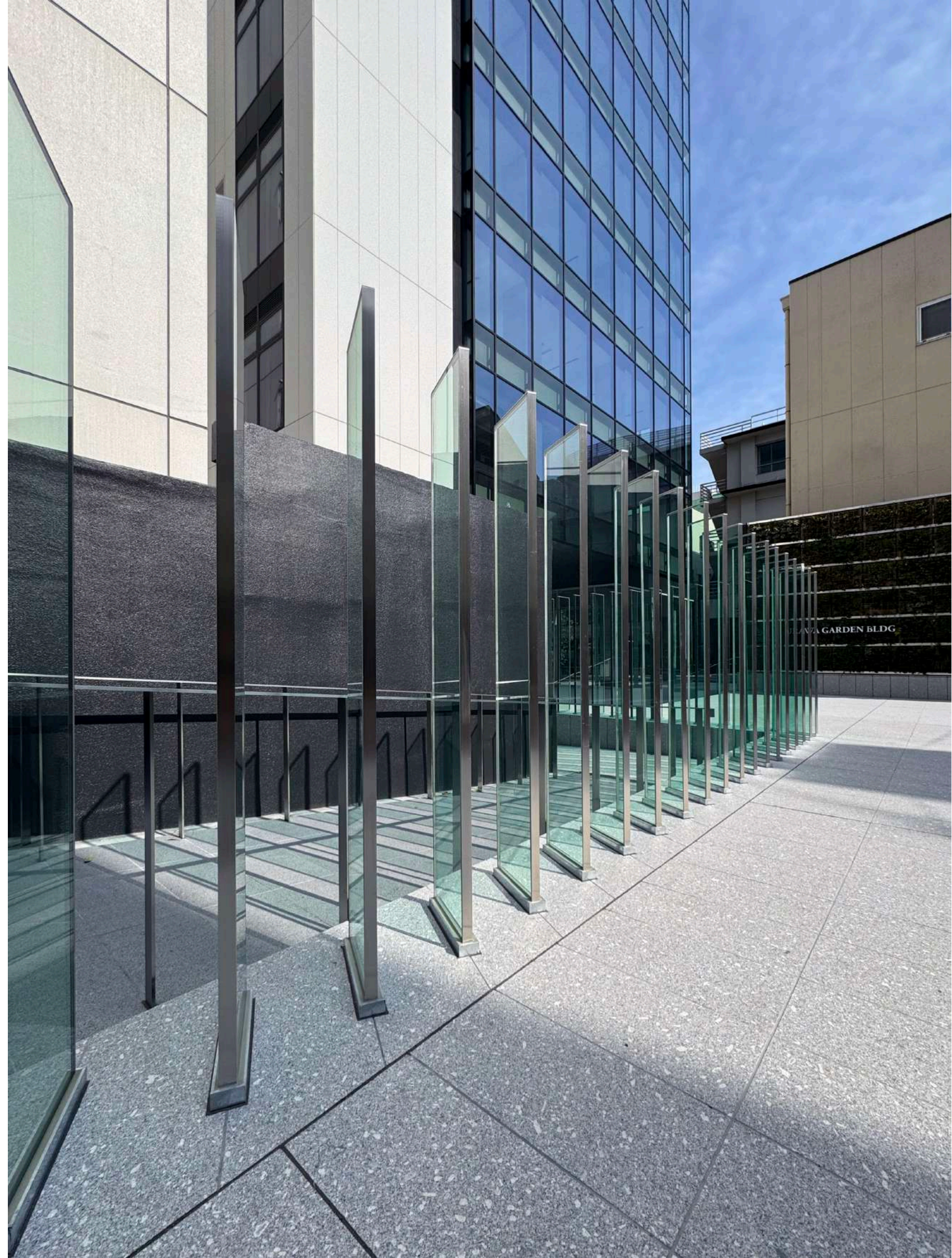


Office entrance hall





South plaza



10th-floor garden (water basin)

