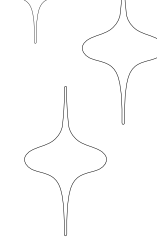
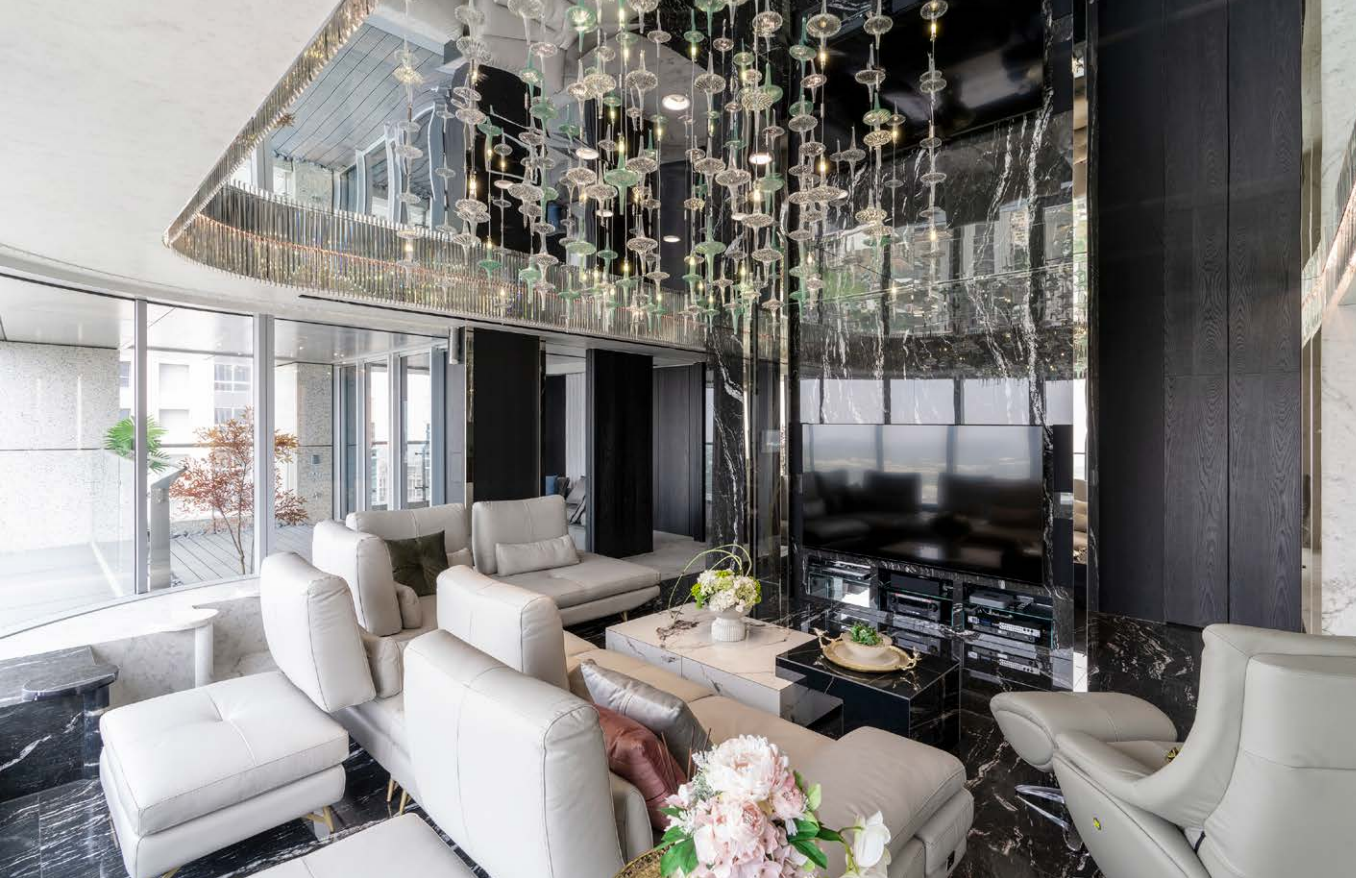




*Baccarat Waltz*

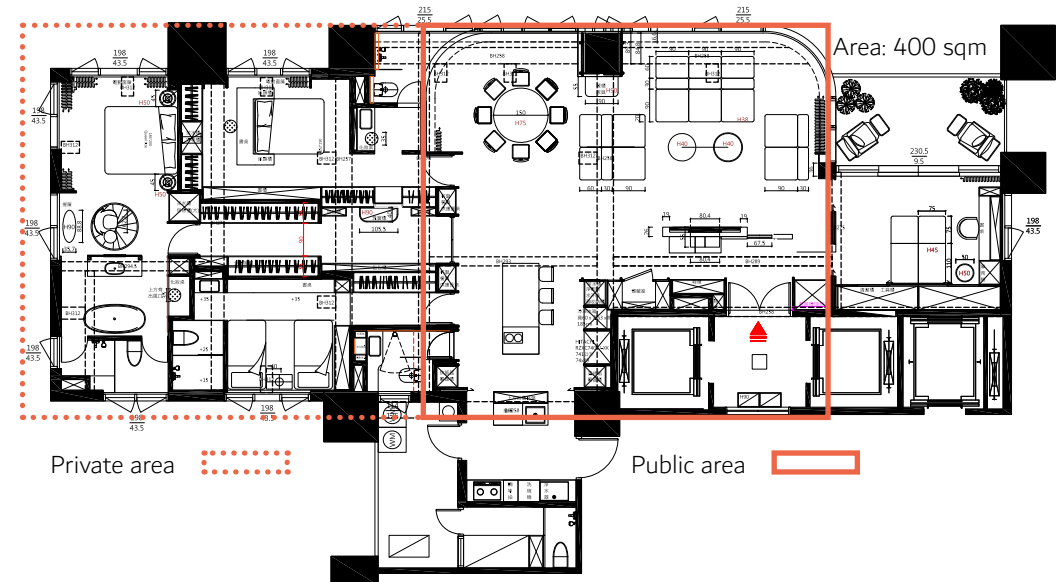




This case takes Baccarat crystal as the theme image, makes the crystal building materials artistic, and extends through the entire interior space.

Through elegant and light design techniques, the bright impression of crystal art, like a classical waltz, is delicate and natural in home field dance.

At the same time, it also converges the redundant structure and functional traces of the space, opens a bright and open life vision, and creates a fashionable and exquisite artistic mansion.



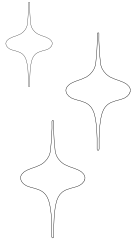




Combined with the design of mirror ceiling and full spectrum light source, it breaks through the physical limitation of space quadrant and creates twice the visual height, making the hall area interleave between the stylish and luxurious virtual and real large objects.

*Mirror Ceiling*



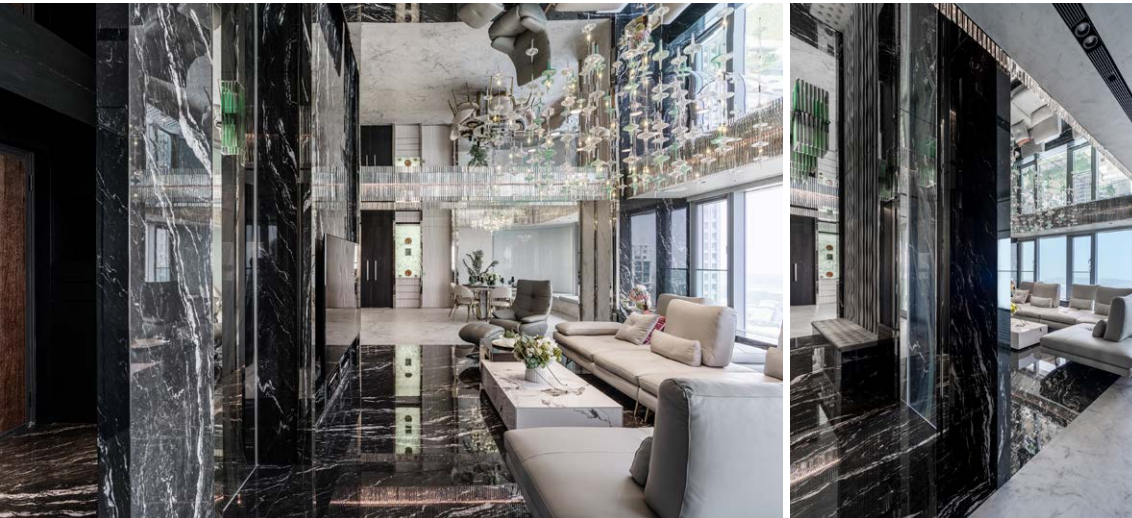


## *Full spectrum light source*

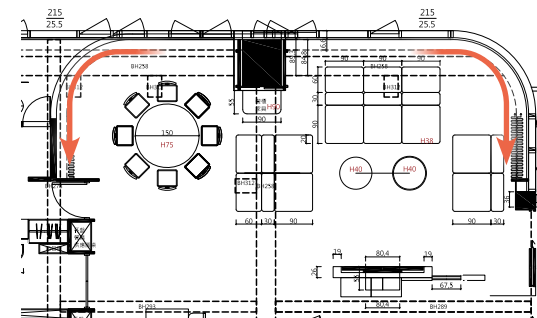
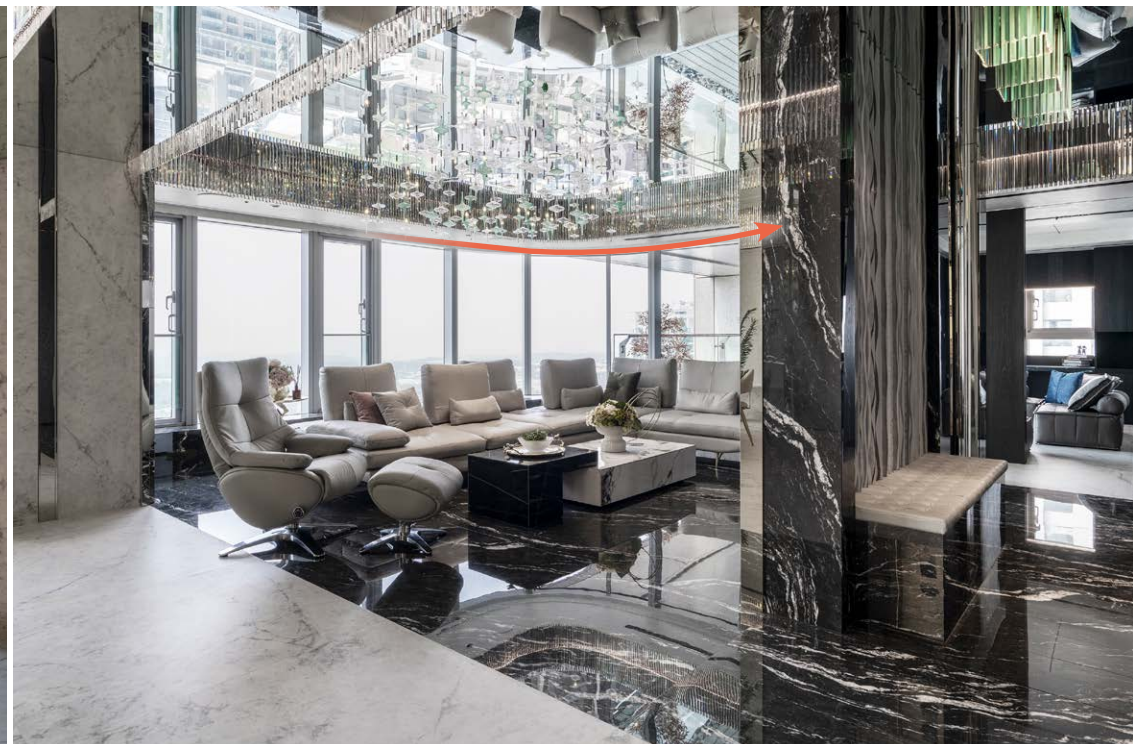
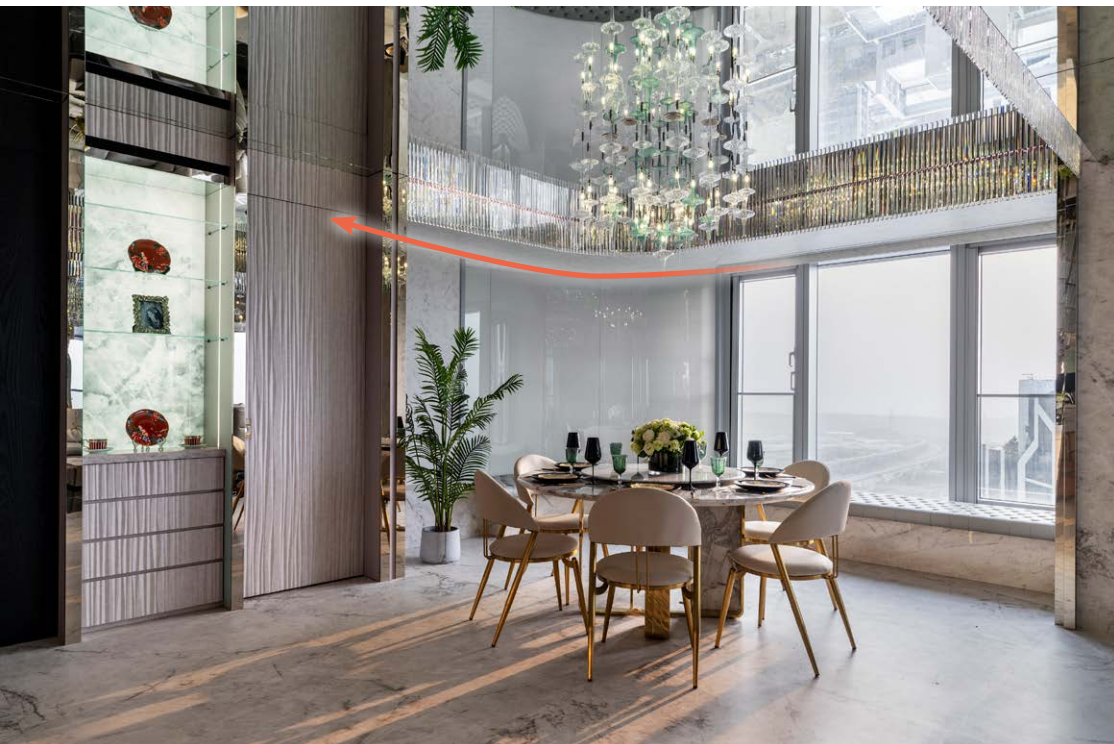
The color rendering of stereoscopic light is also in line with the true presentation of naked color.

The high and low scattered decorative lights become a moderate concealment of vision, eliminating the abnormal scene of upper and lower mirrors.

The ceiling of public area in living room and dining room is made of all-mirror material, with crystal bars combined with lighting, and blocks of black marble ceramic board, connecting a vertical quadrant of virtual and real visions, and showing the height of hall area.







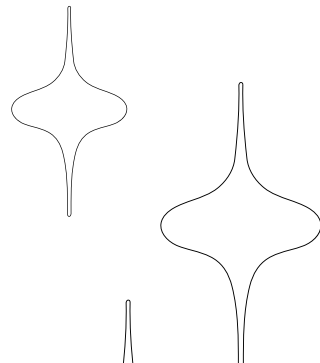
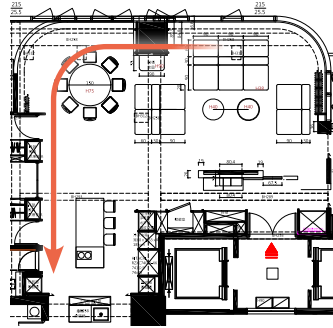
## *Dining area*

In response to the arc pattern on one side of living room, the designer plans a corresponding arc sleeping bed in dining area, shaping the symmetry and stability of the pattern, and by the definition of color, dividing the domain of respective spaces.



# *Dining area*

A circular sleeping area is incorporated into the dining room side, and is connected with the axis of sofa and display cabinet to create balance and stability in pattern use.





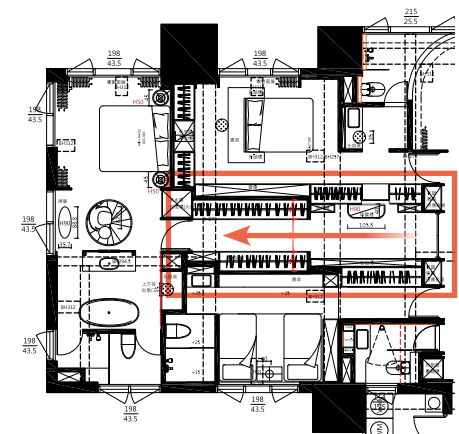


## *Private area*

In private area, with the integration of dressing room and corridor, it has three benefit considerations of storage, moving line and privacy, and also conforms to the use of ergonomics.

It also uses the deep transition zone to contrast with the open and bright bedroom, and expands the privacy feeling of space through visual psychological effect.

Dressing room / corridor



*Open and Bright bedroom atmosphere*

