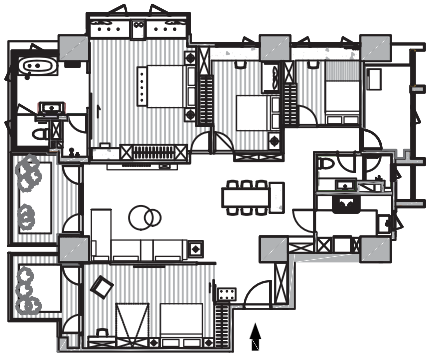




Harbor of the Heart





This is a new residential building located in the art district of Kaohsiung's Pier-2, adjacent to Kaohsiung Harbor and boasting beautiful sea views. Designed for those who value taste, the project extends the overall modern and luxurious style of the architecture, striving for elegance and grace in materials selection, furniture configuration, and soft decoration color matching. At the same time, it highlights excellent lighting and views, allowing residents to enjoy the beautiful sunshine and sea breeze at home with ease.









The extended architecture embodies a modern and luxurious style. The interior layout of the four rooms is entered through the entrance, where you can feel the atmosphere and understated luxury style created by natural solid wood and atmospheric stone. The delicate texture of the stone in the dining area and the TV wall in the living room subtly echoes the abundance and grandeur of the waves, extending the elements of the harbor and filling the space with the rhythm of ocean flow.





The wall and storage cabinet materials and proportions of the public area are carefully planned to present a concise and rich visual experience. The use of solid wood ceiling and display cabinets creates a warm and stable dining space, while the clever combination of mirrors and glass, along with the delicate titanium-plated metal frames, enhances the spatial layering and refined elegance through the use of light sources.





Beyond the eye-catching public area, the bedrooms on both sides are also well-proportioned with delicate planning, providing a soft and stress-free atmosphere to the space. By arranging delicately the materials such as stone, solid wood, exposed concrete, glass, and fabrics in a more flexible and delicate way in terms of layers and proportions, the space not only has complete functionality but also maintains transparency and spaciousness.











The overall space is designed with ingenuity, achieving the perfect balance between addition and subtraction in the soft and hard material ratios, in a low-key yet luxurious atmosphere.